

THE ODYSSEY PLUS



NURSE CALL SYSTEM

Integrated Communication Solutions
By West-Com Nurse Call Systems, Inc.



West-Call® Odyssey Plus Main Screen

Summary:

CALL TYPE	TOTAL	%	RECALLS	TOTAL	%
BED PAN	1	6.7	1	12.5	
PAIN MED	6	40.0	3	37.5	
ROUTINE	8	53.3	4	50.0	
TOTALS:	15		8		

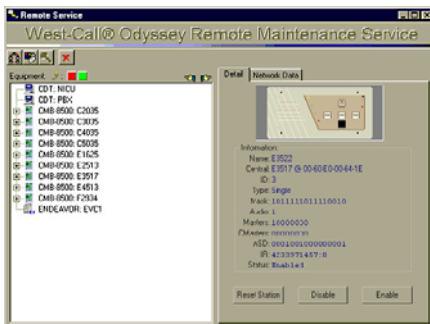
CALL TYPE	BEEP RESPONSE			ROOM RESPONSE			TOTAL RESPONSE			STAY IN ROOM		
	AVG	HIGH	LOW	AVG	HIGH	LOW	AVG	HIGH	LOW	AVG	HIGH	LOW
BED PAN	00:00	00:00	00:00	00:00	00:00	00:00	00:00	00:00	00:00	00:00	00:00	00:00
PAIN MED	00:00	00:00	00:00	00:00	00:00	03:16	07:47	00:31	00:50	01:55	00:11	00:00
ROUTINE	17:31	17:31	17:31	03:46	03:46	03:48	08:49	21:17	00:23	01:00	01:53	00:12
OVERALLS:	17:31	17:31	17:31	03:46	03:46	03:48	08:49	23:37	00:31	00:56	01:56	00:10

STAFF NAME	PATIENT #	CALLS		ROUTINE VISITS		TIME WITH PATIENT	OTHER TIME	TOTAL TIME
		#	TIME	#	TIME			
BARBARA BERRY	6	00:03	32	7	00:05	53	00:00	00:09:25
BECKY PALMER	6	00:03	32	9	00:04	56	00:00	00:24:56
IRIS H	1	00:01	55	7	00:07	03	00:18	00:18:58
JOSH MEGGERS	2	00:03	19	00:03	19	00:03	19	00:03:19
LINDA GREEN	1	00:00	44	00:00	44	00:00	44	00:00:44
MARY WARD	1	00:00	57	4	00:06	21	00:07	00:07:18
MATTHE SIMONS	1	00:00	12	10	00:19	00	00:19	00:19:12
NANCY HAM	7	00:20	14	00:20	14	00:20	14	00:20:14
STEPHANIE SEYMID	1	00:00	14	00:00	14	00:00	14	00:00:14
TANDY	12	00:19	31	00:19	31	00:19	31	00:19:31
TOTALS:	60	00:07	261	68	01:06	53	00:03	00:00:00

West-Call® TQI 2000 Summary



Odyssey Plus Send Page Window



West-Call® RMS Main Screen

Odyssey Plus Features

- User-friendly touch screen interface with colorful and descriptive graphics.
- Color map layout of nursing floor that shows staff location and occupied rooms.
- Automatic shift change features.
- Automatically reminds staff of unanswered calls.
- Easy to swing rooms and is easily set in unattended mode.
- Full duplex voice audio for uninterrupted voice communication between the patient and caregiver.
- Patient information is automatically displayed on screen when a call is answered for a personal response to patient's request.
- System can be easily configured through the software to meet the needs of all patient care delivery models.
- Instant help available through information buttons on every screen. This feature gives users detailed instructions on the use of system features.

Automatic Staff Location

- The Odyssey Plus map shows the current location of staff members.
- Advanced staff search features with auto-connect and instant-page.
- Location data and staff members' names are used in productivity reports.

Productivity Reports

- The West-Call® TQI 2000 integrates with the Odyssey Plus to produce flexible detailed reports that give valuable insight into a unit's day-to-day operations and allows you to make better-informed management decisions.

Advanced Radio Paging

- Patient calls are sent directly to the team member assigned to that patient.
- Emergency calls are sent directly to the correct response team.
- Specific patient requests are sent to the appropriate patient care providers' pagers.
- "Direct Request" calls for pain med, bedpan, etc., are sent directly and automatically to the correct team member.
- Send messages to individual or groups (i.e. Doctor on phone).

System Integration

- Receive telemetry calls through Odyssey Plus.
- Use the West-Call® CDT for central annunciation of code blue and fault alarms.
- Download patient information automatically when interfaced with an ADT system.
- Receive IV alarms on the appropriate caregiver's pager.
- Interface with all hospital beds' features, including bed exit.
- Interface with security and infant abduction systems.
- Able to receive shift information from staffing systems.

Maintenance Tools

- The West-Call® Odyssey Plus incorporates state-of-the-art, short-proof, plug-in modules to ensure reliable, fast and efficient service.
- Service panel located on the central exchange provides troubleshooting information.
- The West-Call® RMS allows for centralized system maintenance that includes system backups, software upgrade distribution, system configuration editor, disabling of system devices, system history log and remote dial-up access.