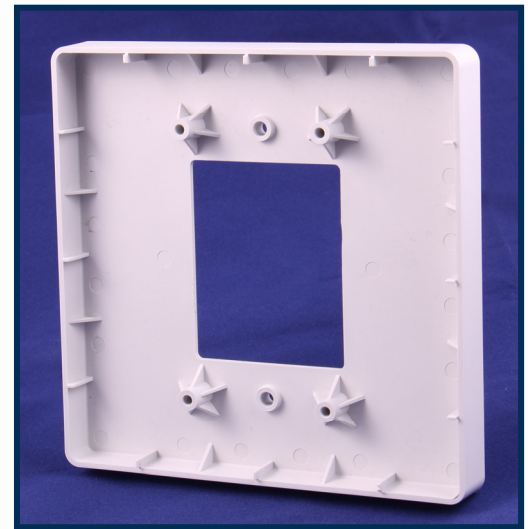


new product release

## The West-Call® NV-DOME Adapter† for the NV-DOME

Introducing the latest innovation in the West-Call® product line: The **West-Call® NV-DOME Adapter** can be used to attach a two-gang NV-DOME to a one-gang back box.



### The NV-DOME Adapter Features:

- ▶ Standard ABS Plastic for a seamless match to the Dome Light.
- ▶ Mounting holes for standard one-gang plaster ring.
- ▶ Can be used on a shallow two-gang box to increase depth for ease of installation.



### Ordering Information:

Description	Model No.	Order No.
Adapter for the NV-DOME	NV-DOME ADP	40116010

- For use with the West-Call® NV-DOME

**Please direct questions to West-Com's Technical Support Department at (707) 428-5900 ext. 5.**

**NOTE:** This information should not be used for final design. Consult West-Com for total system requirements.

#### † West-Com Patented Innovations

Components of the West-Call® Novus® system are protected by one or more of the following U.S. Patents: 8,009,021, 7,994,900, D614,520

View West-Com's complete line of West-Call® health care communications solutions at [www.westcall.com](http://www.westcall.com)